

BMW S1000RR '19-

M O U N T I N G I N S T R U C T I O N S

VIDEO

REF 20522

FRONTAL GP SPOILER / ALERON FRONTAL GP



TORX
T25

ALLEN
Nº 3

ID	PIEZA/PART	DESCRIPCIÓN	DESCRIPTION	QTY	REF
1		Soporte aluminio derecho	Right aluminium support	1	SOPOR2P5-R20522
2		Soporte aluminio izquierdo	Left aluminium support	1	SOPOR2P5-L20522
3		Pieza soporte alerón (Tamaño pequeño)	Spoiler support piece (small size)	4	KIT-I-----20431
4		Alerón derecho	Right spoiler	1	10907N/F/HM3
5		Alerón izquierdo	Left spoiler	1	10907N/F/HM3
6		Tornillo Allen M5x30 Ø11 ISO 7380	M5x30 Ø11 ISO 7380 Allen screw	2	TORNI-I7380-767
7		Casquillo Ø13 x Ø8,5 x 9mm	Ø13 x Ø8,5 x 9mm arrowhead	2	CASQUI-----777
8		Tornillo Allen M5x20 Ø11 ISO 7380	M5x20 Ø11 ISO 7380 Allen screw	2	TORNI-I7380-730
9		Tapón tornillo M5 DIN7991 (NEGRO)	M5 DIN7991 Screw cap (Black)	2	TAPON-----92
10		Tornillo M5x16 DIN7991 (NEGRO)	M5x16 DIN7991 Allen screw (black)	2	TORNI-D7991-867
11		Arandela de goma Ø4,5 x Ø11 x 2mm	Ø4,5 x Ø11 x 2mm Rubber washer	2	ARAND-EPDM--722
12		KIT Adhesivos	Stickers set	1	ADHESI----20522

* Algunos de los Componentes se suministran montados / Some components are supplied assembled

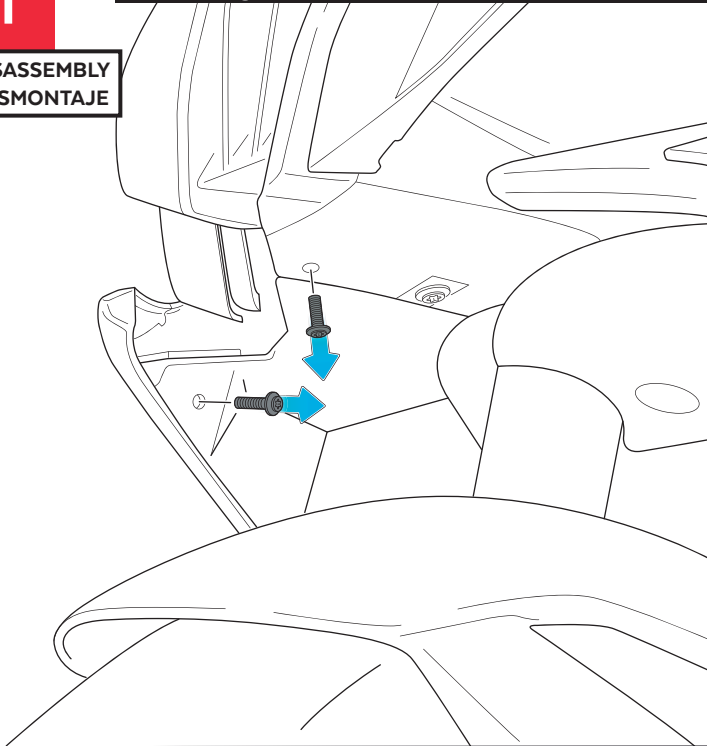
BMW S1000RR '19-

INSTRUCCIONES DE MONTAJE - MOUNTING INSTRUCTIONS - MONTAGEANLEITUNG

1

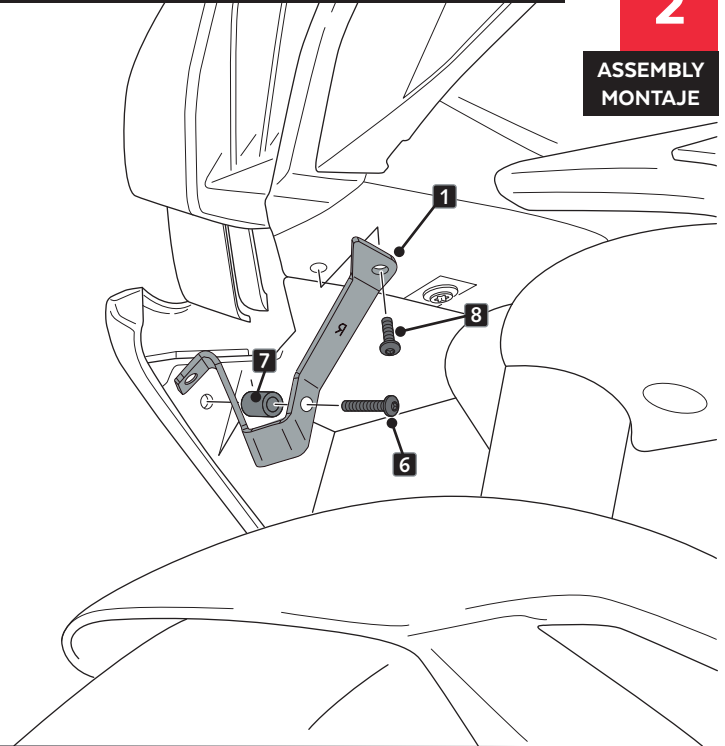
DISASSEMBLY
DESMONTAJE

Se muestra el montaje del lado derecho a modo de ejemplo, realizar los mismos pasos para el montaje del lado izquierdo.
The right side assembly is shown as an example, so the same steps can be performed for the left side assembly.



2

ASSEMBLY
MONTAJE



3

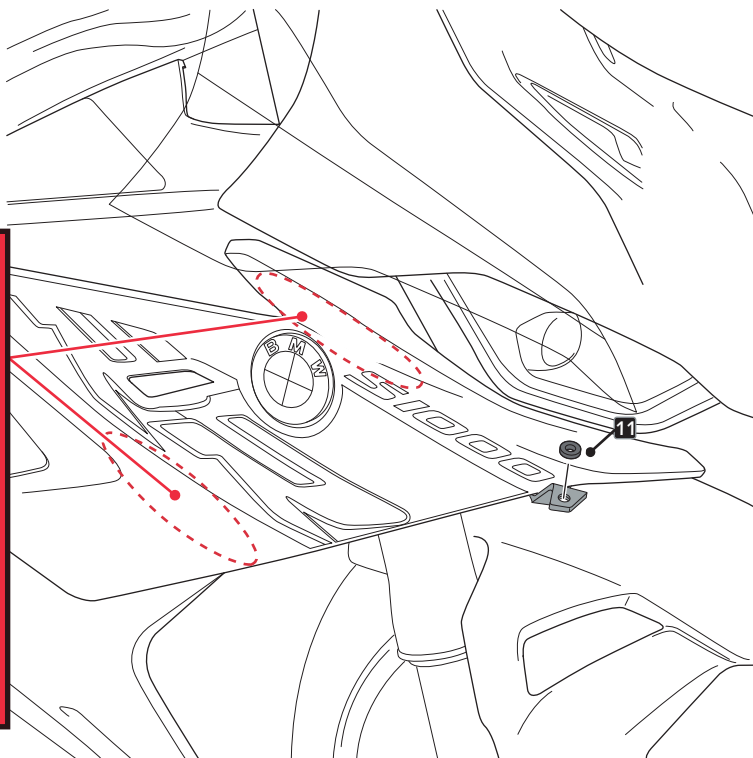
ASSEMBLY
MONTAJE



CLEAN THE SURFACE WITH
WATER OR ISOPROPYL ALCOHOL



CHECK IS COMPLETELY DRY
BEFORE START



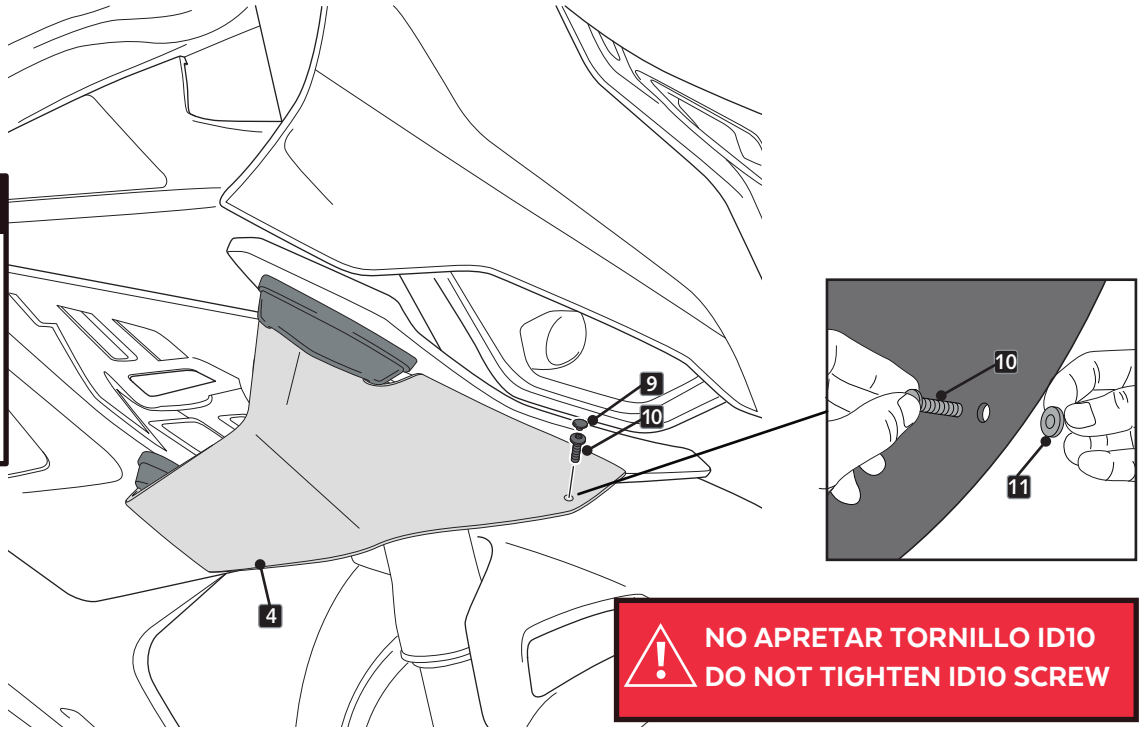
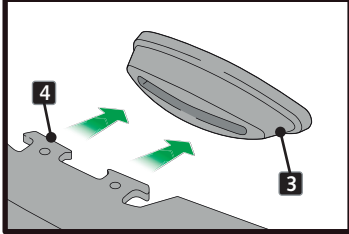
BMW S1000RR '19-

INSTRUCCIONES DE MONTAJE - MOUNTING INSTRUCTIONS - MONTAGEANLEITUNG

4

ASSEMBLY
MONTAJE

4.1 PRE-ASSEMBLY

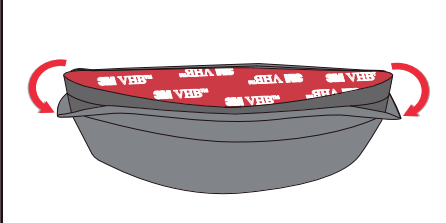


! NO APRETAR TORNILLO ID10
DO NOT TIGHTEN ID10 SCREW

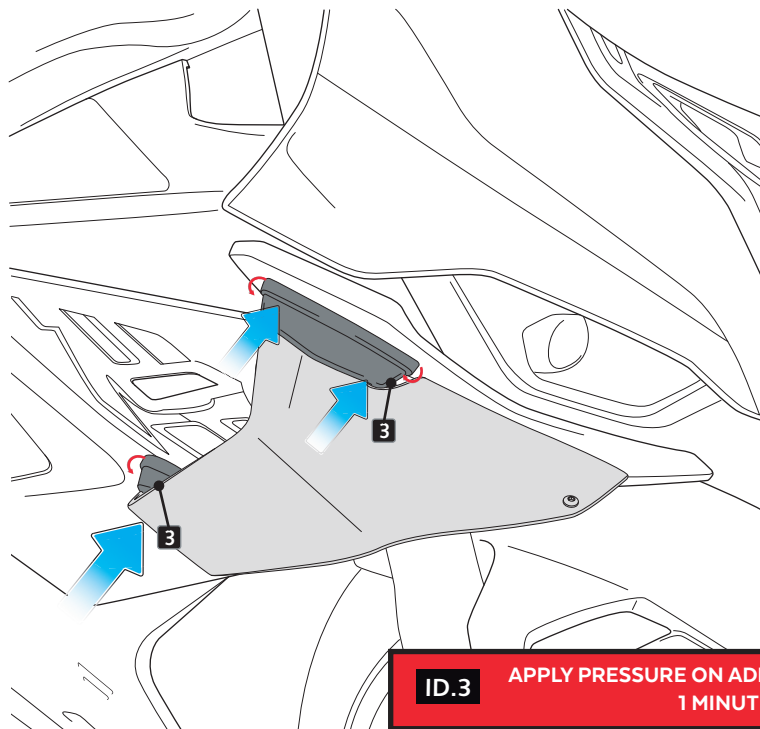
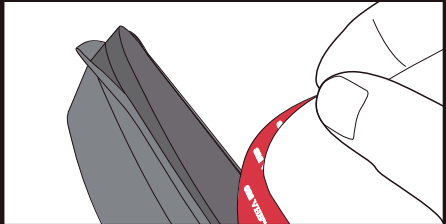
5

ASSEMBLY
MONTAJE

5.1 DOBLAR LOS EXTREMOS DE LA PIEZA
FOLD THE ENDS OF THE PIECE



5.2 EXTRAER PAPEL DEL ADHESIVO 3M
REMOVE PAPER FROM 3M ADHESIVE



ID.3 APPLY PRESSURE ON ADHESIVE AREA FOR
1 MINUT

BMW S1000RR '19-

INSTRUCCIONES DE MONTAJE - MOUNTING INSTRUCTIONS - MONTAGEANLEITUNG

8

ASSEMBLY
MONTAJE

WAIT 24 HOURS

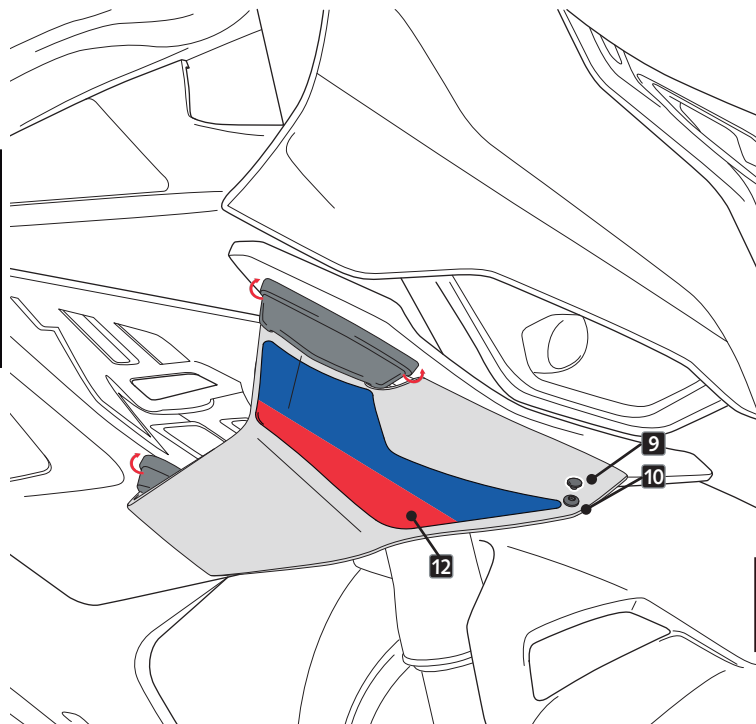


CHECK THE CORRECT ADHESION
OF THE 3M DOUBLE SIDE
SELF-ADHESIVE TAPE
TO THE FAIRING. ENSURE THAT
THE ENTIRE SURFACE
IS WELL ADHERED


9

ASSEMBLY
MONTAJE

DESDOBLAR LOS EXTREMOS DE LA PIEZA
UNFOLD THE ENDS OF THE PIECE



 APRETAR TORNILLO ID10
TIGHTEN ID10 SCREW

 Par de apriete - 2 Nm
Tightening torque - 2 Nm